

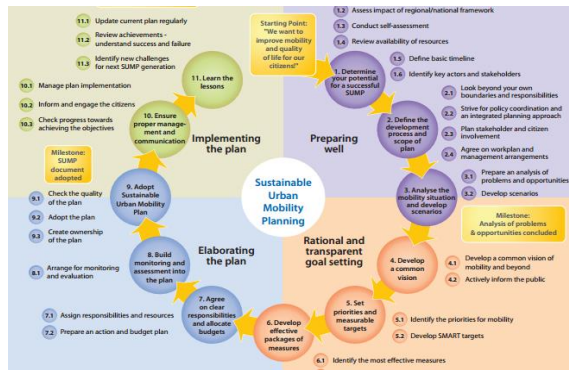


Planning for People®

Who we are and what we do.

Siegfried Rupprecht
Rupprecht Consult – Forschung & Beratung GmbH, Cologne

Our Themes



SUMP planning cycle, Rupprecht Consult



Trolley bus, Eberswalde



Mobility mix

Integrated Planning

- Sustainable Urban Mobility Planning (SUMP)
- Governance & stakeholder cooperation
- Urban and regional plan preparation
- Development of Urban Nodes in the TEN-T

Collective and Intelligent Mobility

- Public transport innovation
- Electromobility strategies
- Connected Intelligent Transport Systems (C-ITS)
- Automation of urban mobility

People-focussed Mobility Solutions

- Integrated mobility solutions
- Sustainable life styles
- Active mobility
- Community-based innovation

A prime knowledge partner in sustainable urban mobility innovation

Our Services



Planning workshop, Palma



SUMP Conference 2016, Bremen



Stakeholder meeting, Bremen

- Project **development**
- Project **management**
- **Evaluation**, monitoring, socio-economic analyses
- **Consultation** processes and **network** management
- Strategic **policy development**
- **Learning** and **knowledge transfer**

Supporting innovative ideas through
concrete projects

People-focussed Mobility Solutions – Key References

■ Integrated urban mobility approaches

- Development and management of major **CIVITAS demonstration projects** (CARAVEL, MOBILIS, ELAN, DYN@MO) and five support actions (*active since 2001*)
- **Innovation Toolboxes TIDE, CIVITAS/ SUMP** (inspiring transport measures)
- **Congestion Impact Assessment Tool (FLOW)**
- **Promotion and take-up** of innovative urban transport concepts (NICHES+)
- Fostering **multimodality** (BEMP, Synaptic, BAPTS)

■ Sustainable life styles

- Mobility management in **ageing societies** (AENEAS)
- “Implementing a large **CarSharing** scheme” (BEMP)
- Rethinking everyday mobility (ELAN)
- **Social inclusion** (INCLUSION)

■ Active mobility

- Policy guides & fact sheets on **cycling promotion** and pedelecs (PRESTO)
- **SWITCH Campaign Guide** and **Toolbox**

■ Community-based innovation

- Sustainable **Neighbourhood Mobility Planning** (SUNRISE)
- “**Participation 2.0**” (DYN@MO)
- Neighbourhood **Accessibility Planning** (NICHES+)



Active mobility

Collective and Intelligent Mobility – Key References

■ Public transport innovation

- Concepts and business cases for the **electrification and automation** of public transport
- **Capacity building** for public transport authorities and companies (e.g. Eco-driving for clean vehicles)
- Recommendations for public **charging infrastructure** at multi-modal hubs (e.g. Sustainable Transport Forum 2017)

■ Electromobility strategies

- Development of integrated **electromobility strategies** for smart cities (e.g. Rostock 2015)
- Development of concepts for **multi-purpose charging infrastructure** (e.g. ELIPTIC 2017)

■ Connected and Automated Driving

- Stakeholder consultation for EU policy development on **Connected and Automated Driving** (e.g. AV-ready framework)
- COST Action on **automation impacts** (WISE-ACT)
- Development of **ITS-priorities** for KfW lending portfolio
- Agenda setting and moderation of automation in cities break-out sessions at leading **EU and US automation conferences**



Trolley bus, Parma



E-bus driving training



Integrated Planning – Key References

■ Sustainable Urban Mobility Planning (SUMP)

- SUMP **Guidelines** (2013) and **Glossary** (2016)
- SUMP **Self-Assessment tool** (on www.eltis.org)
- SUMP **needs assessment** survey (2017)
- **Guidance** for key SUMP CHALLENGES
- SUMP **Conferences** Sopot 2014, Bucharest 2015 and Bremen 2016
- **International** cooperation on SUMP and **National** Urban Mobility Programmes

■ Governance & stakeholder cooperation

- Guidance for **local SUMP processes** and pilot innovations
- Moderation and facilitation of **cooperation** processes

■ Urban and regional planning

- SUMP **development** for regions and metropolitan areas
- **Quality control** of SUMP development (e.g. Vienna)

■ Development of Urban Nodes in the TEN-T

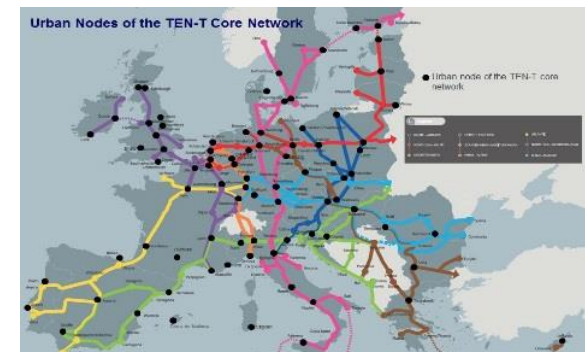
- Recommendations for **European Commission** “Improving the efficiency of urban nodes” (2016)
- Strategy for urban nodes in **Germany** for Federal Ministry of Transport (2017)



SUMP Guidelines and CHALLENGE Manuals



Planning workshop, Budapest



Urban Nodes of the TEN-T Core Network, Rupprecht Consult

Learning and Exchange – Key references

■ Face-to-face learning and exchange

- **Thematic workshops** (e.g. series of workshops for 50 cities in TIDE project's Circle of Innovative Cities)
- **Conferences** (e.g. organisation, content development and moderation of the European **SUMP conferences** 2014, 2015 and 2016)
- **Twinning programmes for practitioners** (e.g. **FLOW outreach strategy**: 6 partner cities, 9 **exchange cities**, 12 market forerunners)

■ Interactive online learning

- **Webinars** (e.g. urban road automation online seminar series from September 2017)
- **Moderated online courses**
 - CH4LLENGE e-courses on SUMP participation, evaluation, measure selection, institutional cooperation;
 - SOLUTIONS international SUMP online courses;
 - PRESTO e-courses on promotion of cycling in cities
 - Online decision maker briefings on EU Transport White Paper Action Plans (TRANSFORuM)

■ Learning packages

- Series of workshop-webinar-online course packages on **integrating active modes in transport modelling** (FLOW) and **SUMP** (SUMPs-Up Learning Cities Programme)



SUMP Conference 2016 © Wolfgang Look / Eduardo Cinta



TRANSFORuM e-course



FLOW webinar

Clients & Project Partners

■ European Commission & other EU Institutions

- Directorates General for Transport, Research, Energy, Environment, Information Society, EASME, INEA, Joint Research Centre, European Economic and Social Cttee.

■ Cities & regions, public utility & service companies

■ Networks and NGOs

- POLIS, UITP, FEHRL, UBC, Walk21, ECF, ICLEI, EMBARQ, Eurocities, SLoCaT, TRB

■ Industry

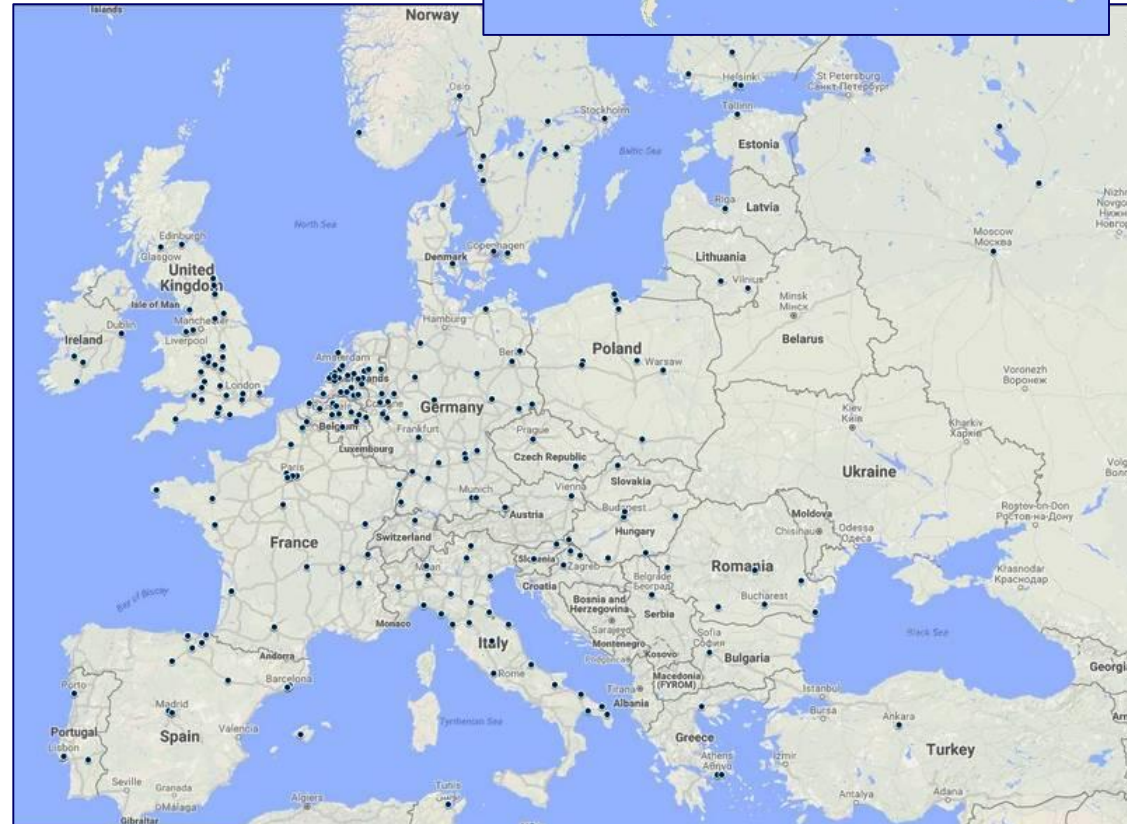
- telecom, IT industry, vehicle manufacturers

■ International organisations

- UN University, UNESCO

■ Research & consulting organisations

...all over Europe and worldwide ...



Network of international clients and project partners

International Expertise

Network of international clients and project partners

■ SUMP Backstopping and Quality Control

- Peru and Ukraine (for GIZ)

■ FUTURE-RADAR

- Capacity building of local stakeholders in Europe, Asia and Latin America on urban electric mobility solutions

■ CIVITAS SATELLITE

- International cooperation (China/ Asia, US/ TRB)

■ SOLUTIONS

- Uptake of innovative sustainable urban mobility solutions in Asia, Latin America and the Mediterranean
- Support for SUMP implementation process in Brazil

■ PARAMOUNT

- Urban transport workshops in Russia, China and other parts of Asia

■ CIVITAS CATALIST

- Expanding international alliances to increase visibility of CIVITAS (e.g. Shanghai EXPO 2010)

■ CABRI-VOLGA

- International cooperation on environmental risk management in the Volga basin (with UNU)



Rupprecht Consult - Who we are

- An **independent** research and consulting company focused on sustainable development in cities and regions
- A stable company **founded in 1996** successfully managing projects for over 20 years
- A **financially secure** company with a **turnover of €1.34M** (2016)
- A **great team** of 18 excellent consultants
 - **Interdisciplinary qualifications** in transport, urban and regional planning, geography, architecture, civil engineering, social sciences, sustainability science & education
 - **International experience** with professionals from 7 countries speaking 10 languages



Company excursion to celebrate 20 year anniversary, July 2016

Rupprecht Consult - "Added value"

- A prime knowledge partner in **sustainable urban mobility innovation**
- A key player in **mobility planning**
- An expert in **learning and knowledge transfer**
- An experienced adviser on **strategic policy development**
- A successful **developer and manager of projects** with large consortia
- **Well-connected and trusted** in Europe and internationally
- A great team of **internationally experienced consultants**



© Bernd Decker, Rupprecht Consult



Contact

Rupprecht Consult – Forschung & Beratung GmbH
Clever Str. 13 – 15, 50668 Köln (Cologne), Germany

Tel +49 221 60 60 55 - 11

s.rupprecht@rupprecht-consult.eu

www.rupprecht-consult.eu

www.mobility-academy.eu