

Interreg
Alpine Space



AlpInno CT



AlpInno CT

Alpine Innovation for Combined Transport



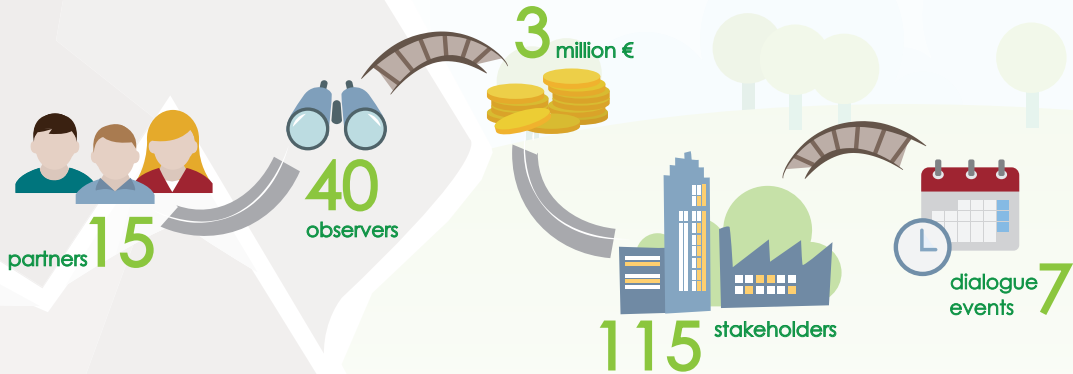
www.alpine-space.eu/alpinnoc





WHAT

The Alps are a **sensitive ecosystem** to be protected from pollutant emissions & climate change. Continued growth in **freight traffic volume** leads to environmental problems. These trends reinforce the need to **review existing transport** & **develop innovative models** to protect the Alpine Space (AS) as set out eg. in the **EU White Paper 2011** and **EUSALP-EU** strategy. But often the efficiency of Combined Transport (CT) is low. Therefore, the project **Alpine Innovation for Combined Transport (AlpInnoCT)** tackles the main challenge to **raise CT efficiency & productivity** through the application of production industry knowhow (which is ideal to improve processes) in CT.





WHY

- To improve the **processes and cooperation** in CT networks
- To integrate **innovative approaches** fostering modal shift from road to rail in freight transport
- To enhance the knowledge and **reinforce the participation** possibilities for each stakeholder in freight transport



WHO

- **Logistics service providers** will benefit from improved processes & an easier CT access.
- **Wagon & semitrailer producers** obtain insights into CT innovations.
- **NGOs & institutions** enter into dialogue with other stakeholders to state mutual interests, raise awareness and approach solutions.
- **Politicians & decision makers** will be better prepared to set the future CT framework with regards to environment.



WHEN

November 2016 - October 2019





WHERE

- Austria
- Germany
- Italy
- Slovenia
- Switzerland



OUTPUTS

- Description of the **state of the art** of the European transport system with focus on CT
- Recommendations for an ideal **CT-model concept** by transfer of production industry knowhow
- **Guideline** for the integration of innovative intermodal approaches into daily CT business
- Alpine wide **dialogue platform** with dialogue events as information exchange brings together all stakeholders & target groups
- **Toolbox of Action** (Handbook)



PROJECT PARTNERS

LEAD PARTNER



Supreme Building Authority - Part of the Bavarian State Ministry of the Interior, Building and Transport

GERMANY



Regional Union of the Chambers of Commerce of Veneto - Eurosportello

ITALY



Bayernhafen GMBH & Co.

GERMANY



Eberl International Forwarding Agency GMBH & Co. KG

GERMANY



TX Logistik AG

GERMANY



LAND KÄRNTEN

Abt. Z... Wirtschaft, Tourismus, Infrastruktur und Mobilität

Regional Government of Carinthia

AUSTRIA



Austrian Federal Ministry for Transport, Innovation and Technology

AUSTRIA



Cipra International Lab GMBH

AUSTRIA



Trieste Port Authority

ITALY



Autonomous Region of Friuli Venezia Giulia

ITALY



Consorzio ZAI Interporto Quadrante Europa

ITALY



European Academy of Bolzano - Eurac Research

ITALY



University of Maribor - Faculty of Civil Engineering, Transportation Engineering and Architecture

SLOVENIA



Institute of Traffic and Transport Ljubljana I.I.c

SLOVENIA



Association for the protection of the Alps from transit traffic

SWITZERLAND